



FOR LEASE

7-13 Tomlins Street, South Townsville, QLD



SENTINEL
PROPERTY GROUP
Dependable Monthly Returns

ABOUT THE PROPERTY

River Quays is one of Townsville's most prominent office buildings and now offers space for businesses to occupy across multiple levels. Just a short walk from Townsville's CBD, this imposing building is ideally positioned overlooking Ross Creek Marina, Cleveland Bay, Castle Hill and the CBD. It's also one street back from Palmer Street, a bustling restaurant, hotel, and apartment precinct. Having undergone an extensive refurbishment in recent times, including End of Trip Facilities and upgrades to the Entry Foyer, Air Conditioning systems, Lift Services and Roof. River Quays offers a high quality of office accommodation with the largest floor plates in Townsville.

KEY FEATURES

- Areas available from 108m² - 1,116m².
- 1 car park available for every 60m² of space leased.
- Back up emergency power through dual onsite generators.
- Unique building signage opportunities.
- 5.5 Star NABERS.

AVAILABLE TENANCIES

Ground	108m ²	Available Now (Existing Fitout)
Level 4	616m ²	Available Now (Existing Fitout)
Level 6	500m ²	Available Now (Existing Fitout)



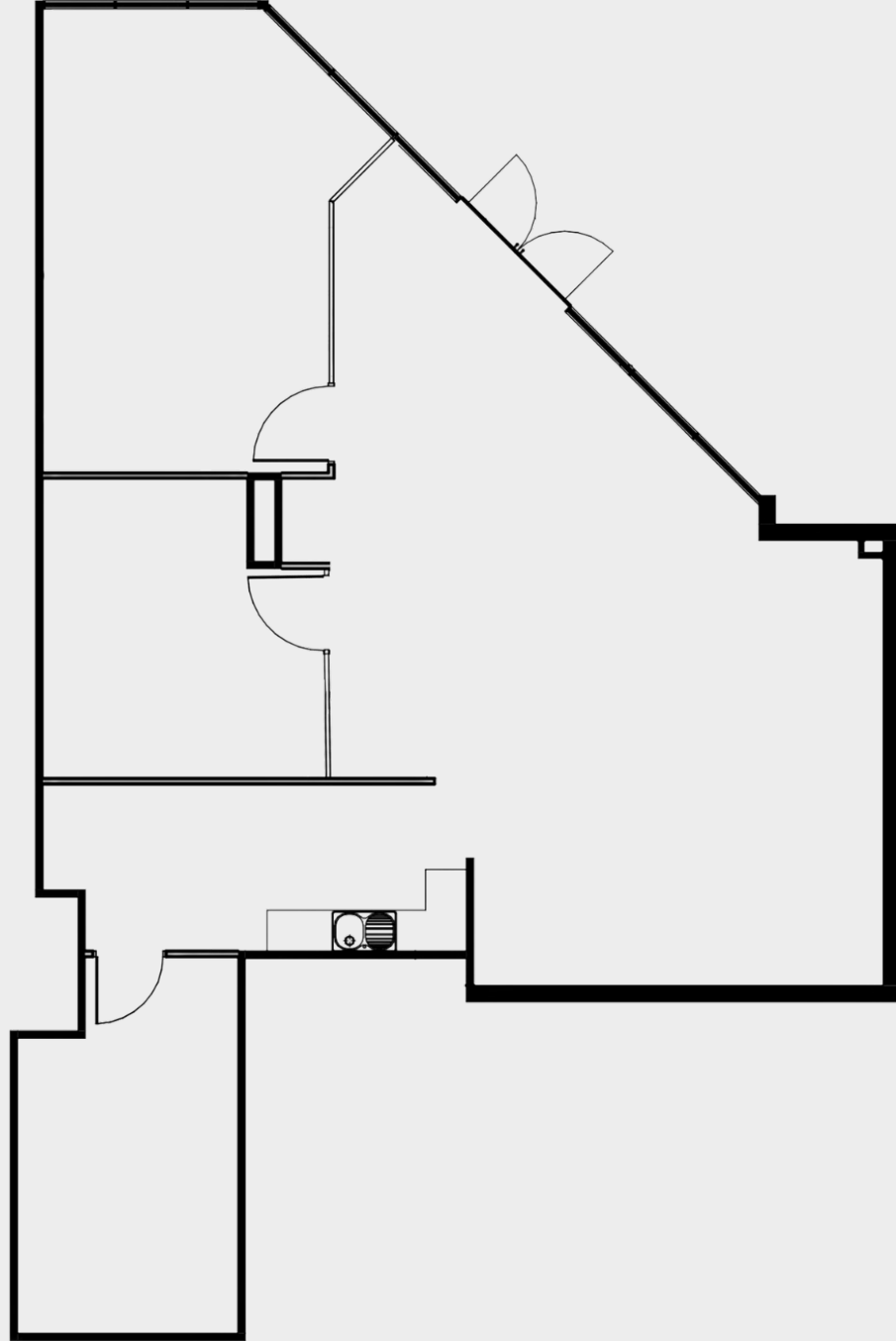
MICHAEL STERLING

- 📞 0400 696 597
- ✉️ michael.sterling@sentinelpg.com.au
- 🌐 www.sentinelpg.com.au

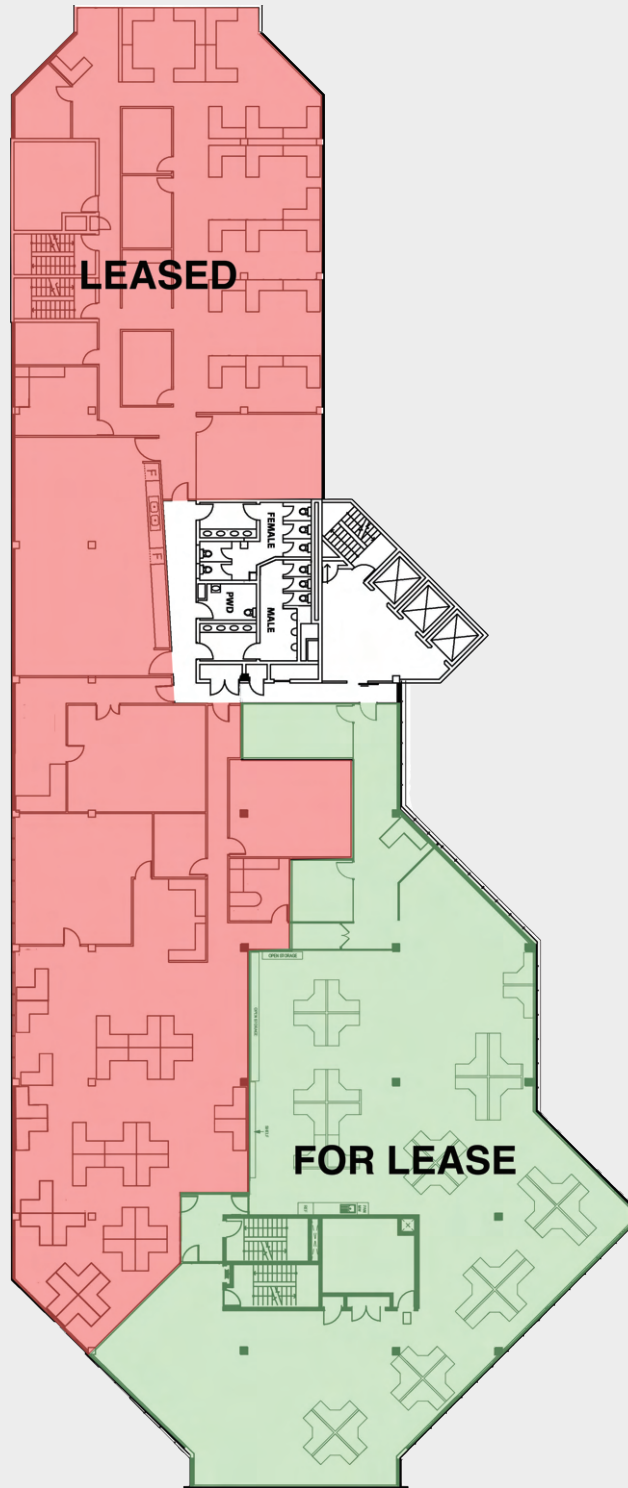


SENTINEL
PROPERTY GROUP
Dependable Monthly Returns

GROUND (108M²) FITOUT PLAN



LEVEL 4 (616M²) FITOUT PLAN



LEVEL 6 (500M²) FITOUT PLAN

